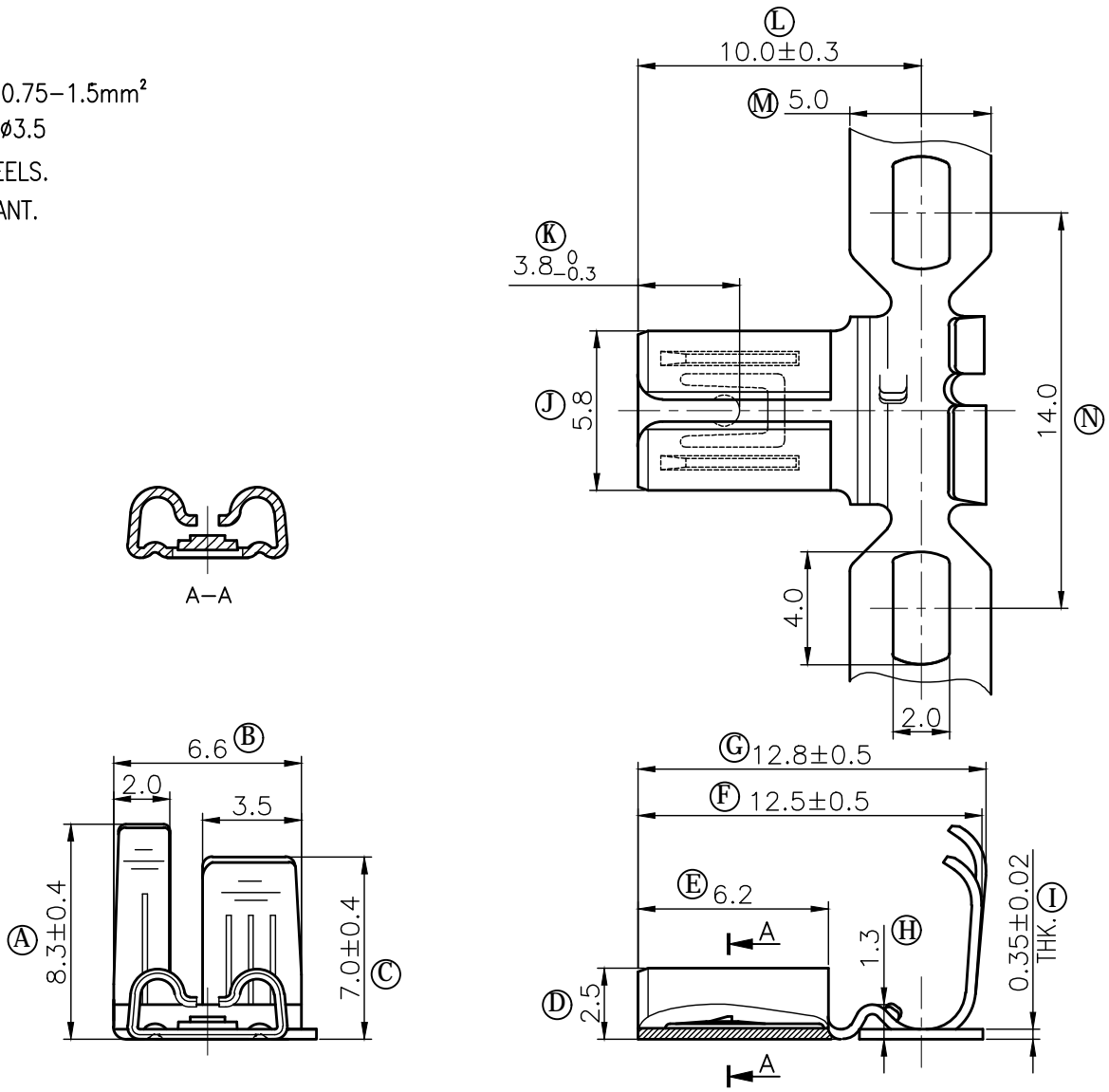


REV.	DESCRIPTION	APPROVED	DATE
A	INITIAL RELEASE	L.H.L	2018/08/08

- 1 MATERIAL: BRASS
- FINISH: TIN PLATING
- 2 MATING TAB: 4.8X0.8
- 3 WIRE RANGE: 18-16AWG, 0.75-1.5mm<sup>2</sup>
- INSULATION RANGE:  $\phi$ 2.1- $\phi$ 3.5
- 4 CONTINUOUS STRIP ON REELS.
- 5 PARTS ARE ROHS COMPLIANT.



CUSTOMER DRAWING	TITLE	MODEL NO.:	DWN:	
	.187 FLAG TYPE RECEPTACLE	FK1870802	L.H.L	2018/08/08
GENERAL TOLERANCES (UNLESS SPECIFIED)	.X ±0.2	DWG NO. :	REV.:	CHK:
	.XX ±0.05	CD-FK187-001	A	C.H.P
	.XXX ±0.01	UNIT: mm	SCALE: 5:1	APP:
	A' ±2'			2018/08/08

